



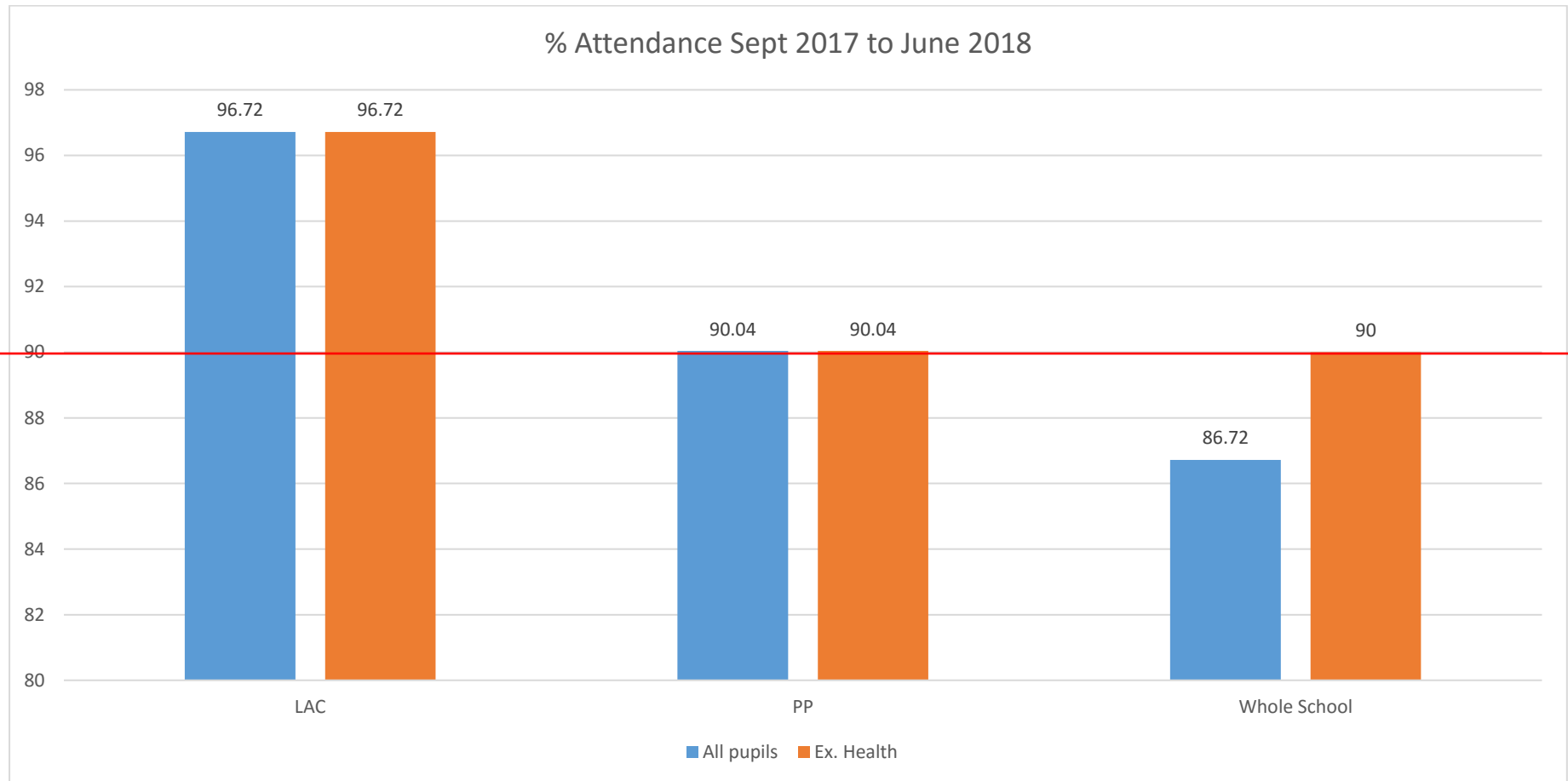
Castle Hill School

---

# **Monthly Attendance Report**

## **2017-2018**

### **June**



*Exclusion of health/medical related absence refers to those pupils who are off school for significant periods of time due to reasons relating to their condition. Medical appointments and general health absences are included.*

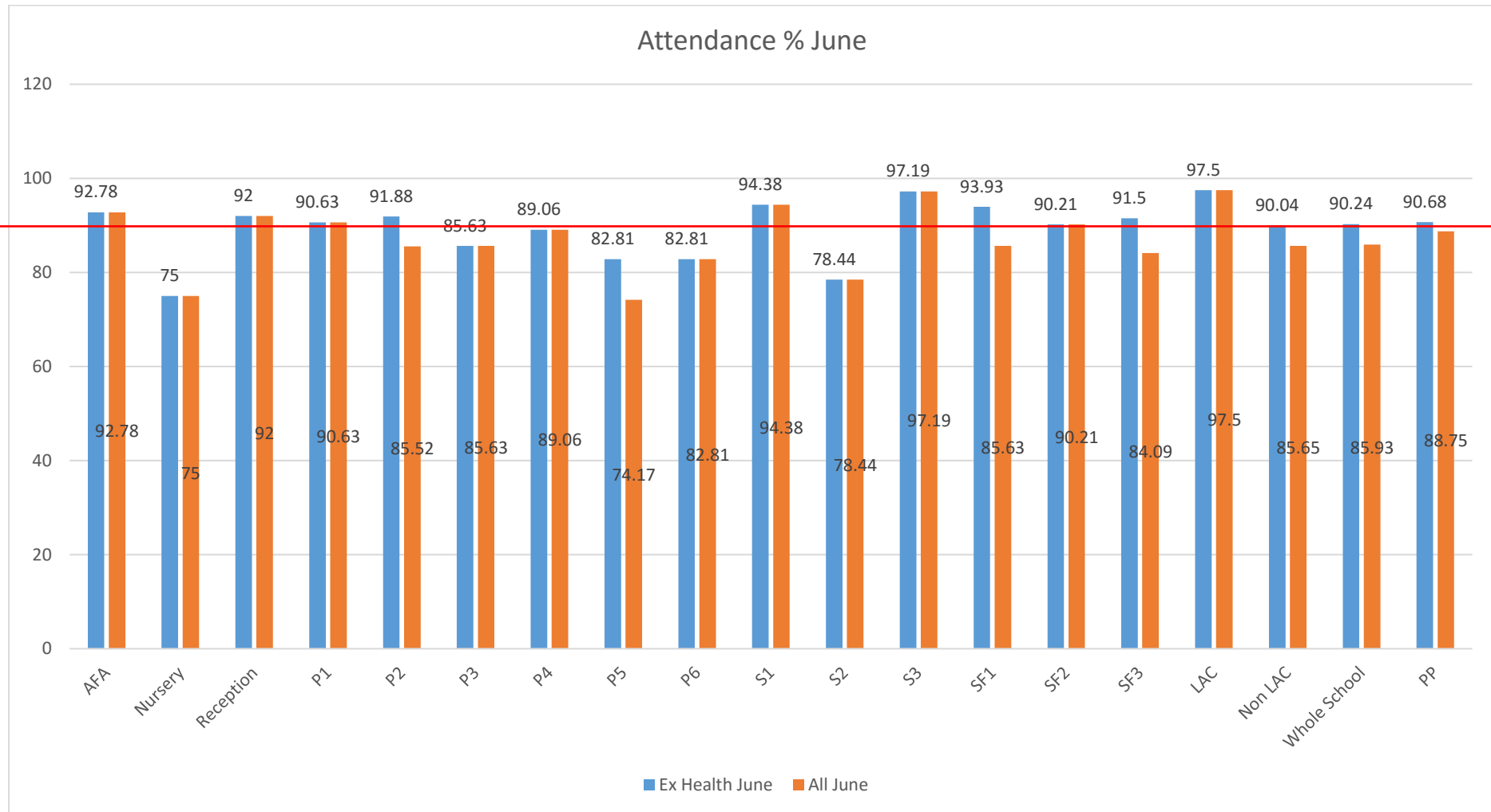
Analysis:

The red line indicates the 2015-16 national DfE statistic data for attendance in Kirklees Special Schools (90.2%).

The whole school data continues to be in line with expectations when pupils with long term medical needs have been taken into account.

Outcomes:

The Family Liaison Support officer continues to track absences and keeps in regular contact with families whose children are absent from school. Where there is a significant reduction in attendance monitoring has been put into place. This includes weekly discussions between the Principal and FLOSO. Home visits and phone calls home are made on a regular basis to support integrating the pupils back into school.



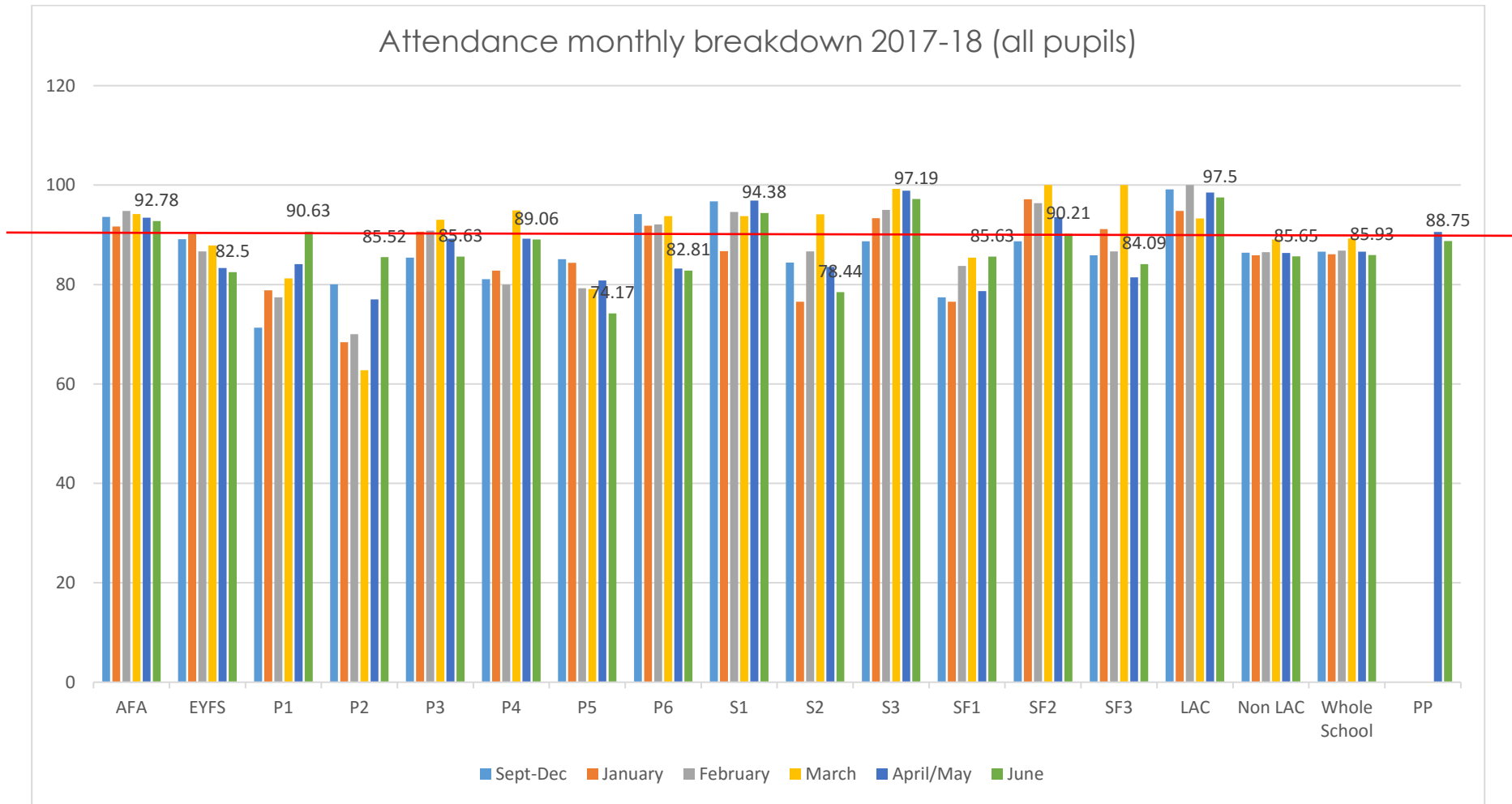
Analysis:

Some classes have lower than expected attendance once medical and health issues have been factored. Nursery (part of Early Years and Foundation Stage) – 1 pupil illness; P3 – 1 pupil long term absence; P5 – 2 pupils illness; P6 – 1 pupil injury; S2 – 2 pupils illness

Outcomes:

FLOSO in contact with families in relation to illness/injury. FLOSO liaising with Kirklees with regard to long term absence. For pupils on longer term illness/injury, work has been sent home. Injured pupil has returned to school.

Attendance monthly breakdown 2017-18 (all pupils)



Analysis:

Significant drops - P5 (authorised absences), S2 (authorised absences), SF2 (hospital)

Significant rises – P1, P2, SF1, SF3.

Outcomes:

Drops – where these will be followed up and discussed through the supervision meetings.

Rises in P1 and P2 due to ongoing work of FLOSO in contacting families. SF1 and SF3 pupils recovered from illness.

Attendance monthly breakdown 2017-18 (ex. health/medical)

